

## Pilot-controlled pressure relief valve DN 10 to DN 100

for water and oil  
max. 320 bar

Depending on their nominal widths, pilot-controlled pressure limiting valves are pilot-controlled by means of a pressure limiting valve NW 6 or NW 10.

Pressure limiting valves are used to limit a system pressure in the hydraulics. They were specially developed for water hydraulics. Using these pressure limiting valves post-connected valves or cylinders can be supplied with a continuously controllable reduced pressure in accordance with the circuit diagram.

Pressure limiting valves are sealed by pressing two metal cones against one another. The max. working pressure should not exceed 320 bar.

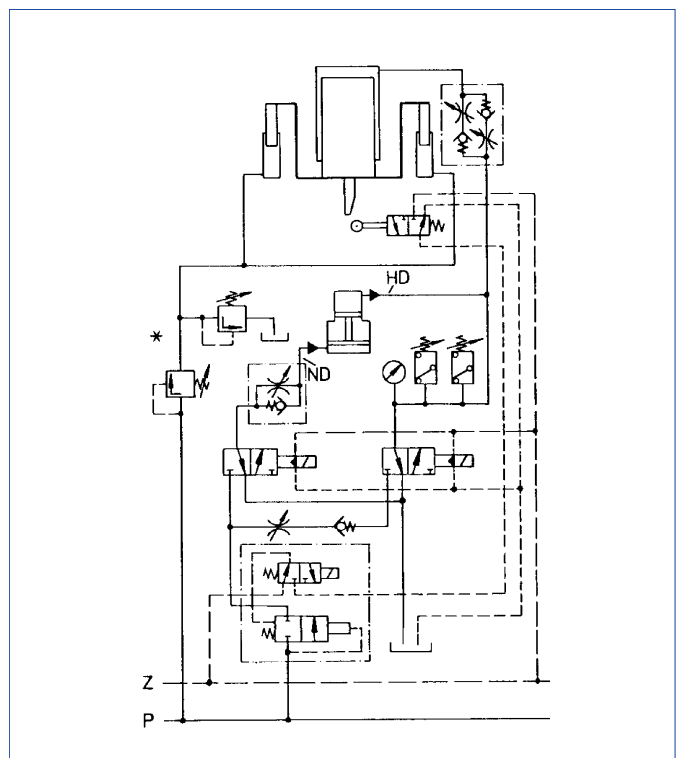
### Special features:

The pressure limiting valve responds without delay when the preset system pressure is exceeded.

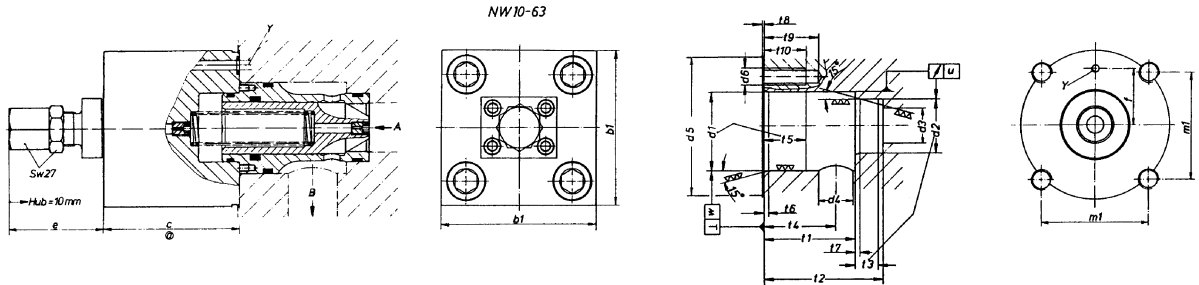
It can be supplied for various different pressure levels.

Within each pressure level it can be set continuously and finely on the spring column.

Mounting example:

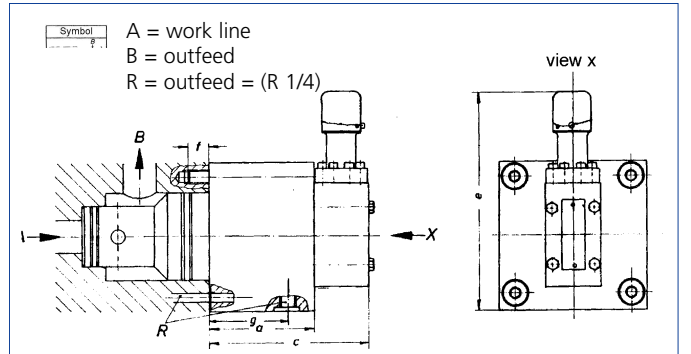
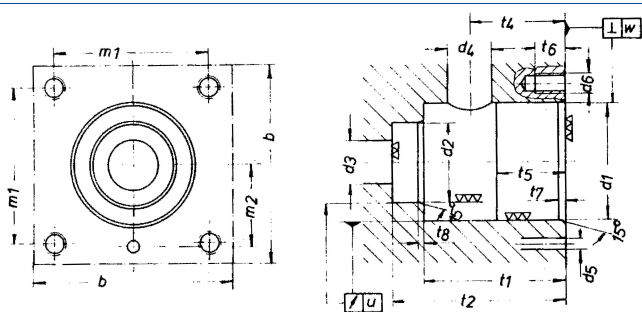
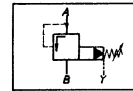


\* pressure limiting valve



nominal width	10	16	25	32	40	50	63
Y		3.5	6	6			
b1		65	85	102			
d1 <sup>H7</sup>		32	45	60			
d2 <sup>H7</sup>		25	34	45			
d3		16	25	32			
d4 min		16	25	32			
d5 max							
d6		M8	M12	M16			
d7							
m1 103		46	58	70			
t1 51		43	58	70			
t2 51		56	72	85			
t3		11	12	13			
t4 bei d4 min		34	44	52			
t5 bei d4 max							
t6		20	30	30			
t7		2	2.5	2.5			
t8		2	2.5	2.5			
t9 max		0.5	0.5	0.5			
t10		25	31	42			
t11		20	25	35			
u		0.03	0.03	0.03			
w		0.05	0.05	0.1			
c		90	95	100			
e		61	61	61			
f		25	33	41			

10		
16	15-160bar	DBVEC-22560
16	150-350bar	DBVEC-22561
25	15-160bar	DBVEC-22568
25	150-350bar	DBVEC-22569
32	15-160bar	DBVEC-22566
32	150-350bar	DBVEC-22567
40		
50		
63		



NW	a	b	c	d1	d2	d3	d4	d5	d6	t1	t2	t4	t5	t6	t7	t8	e	f	m1	m2	u	w	g
16																							
25																							
32	50	120	110	60 <sup>H7</sup>	45 <sup>H7</sup>	32	32	8	M16	70 <sup>+0,1</sup>	85 <sup>+0,1</sup>	52	30	35	2,5	2,5	215	18	90 <sup>±0,1</sup>	40 <sup>±0,2</sup>	0,03	0,05	35
40	75	120	135	75 <sup>H7</sup>	55 <sup>H7</sup>	40	40	8	M20	88	105 <sup>+0,1</sup>	62	40	35	3	3	215	27	82 <sup>±0,1</sup>	49 <sup>±0,2</sup>	0,05	0,1	
50	70	140	130	90 <sup>H7</sup>	68 <sup>H7</sup>	50	50	10	M20	100	122 <sup>+0,1</sup>	72	35	45	4	3	224	31,5	100 <sup>±0,1</sup>	58 <sup>±0,2</sup>	0,05	0,1	55
65																							